

Building Resilience Capacity along the Gulf: Community Resilience Indices Development and Implementation

Jody Thompson

Auburn University Marine Extension and Research Center

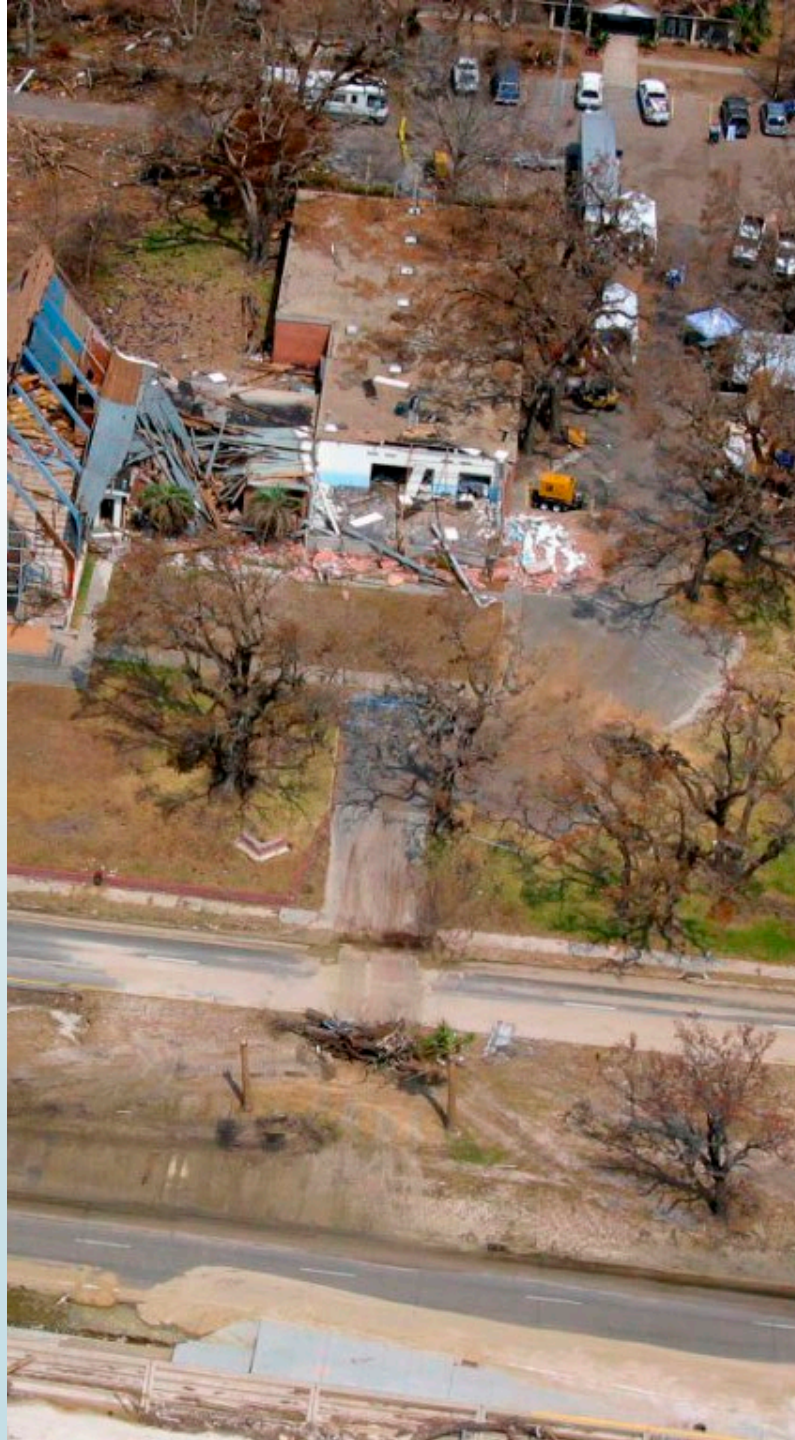
Mississippi-Alabama Sea Grant Consortium

NSS + NEES

April 17, 2019

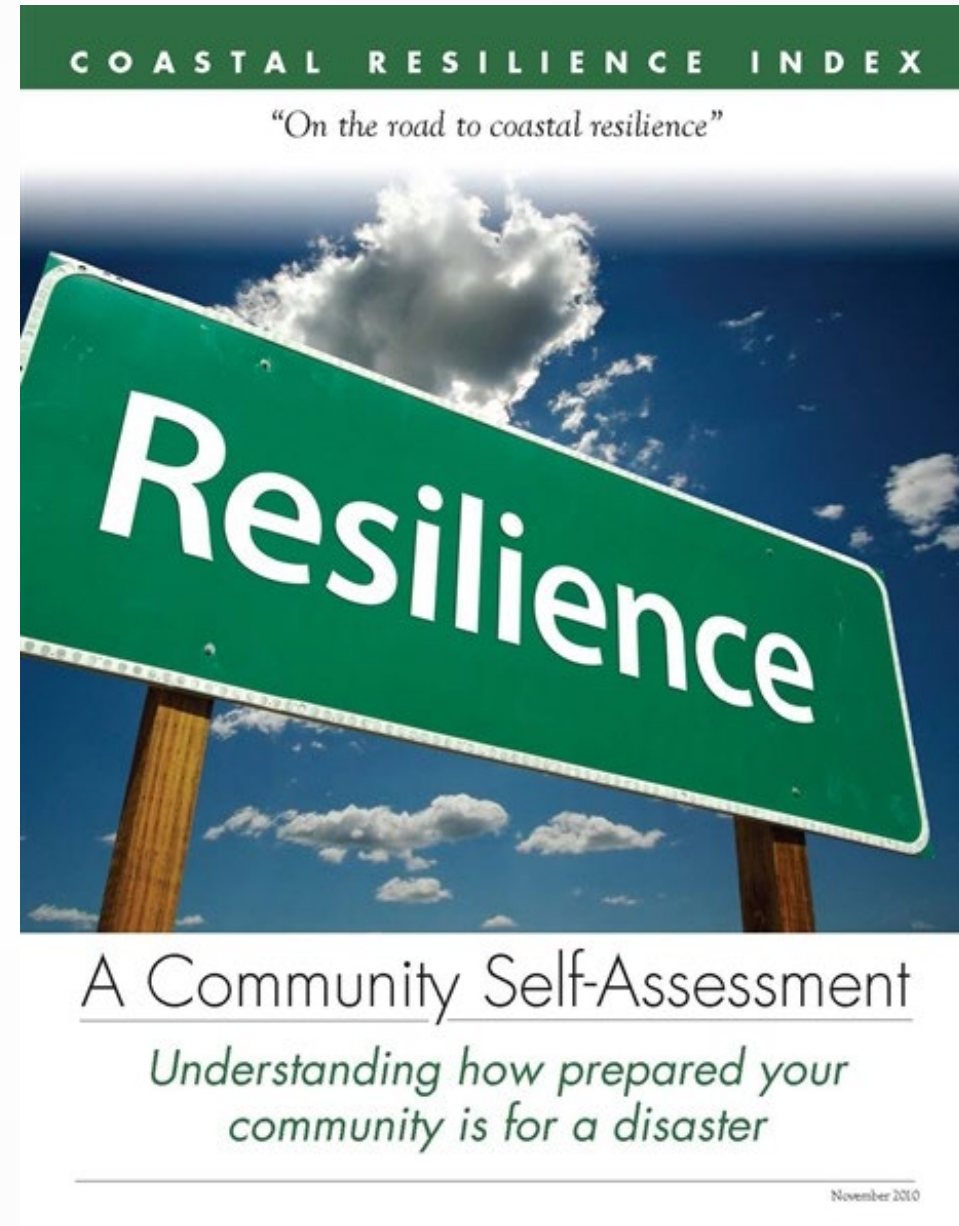


Resilience Along the Gulf



Community Resilience Index

- ▶ A simple, inexpensive method for community leaders to perform a self-assessment of their community's resilience to coastal hazards
- ▶ Identify weaknesses a community may want to address prior to the next hazard event; highlights strengths a community possesses





Format

7 sections

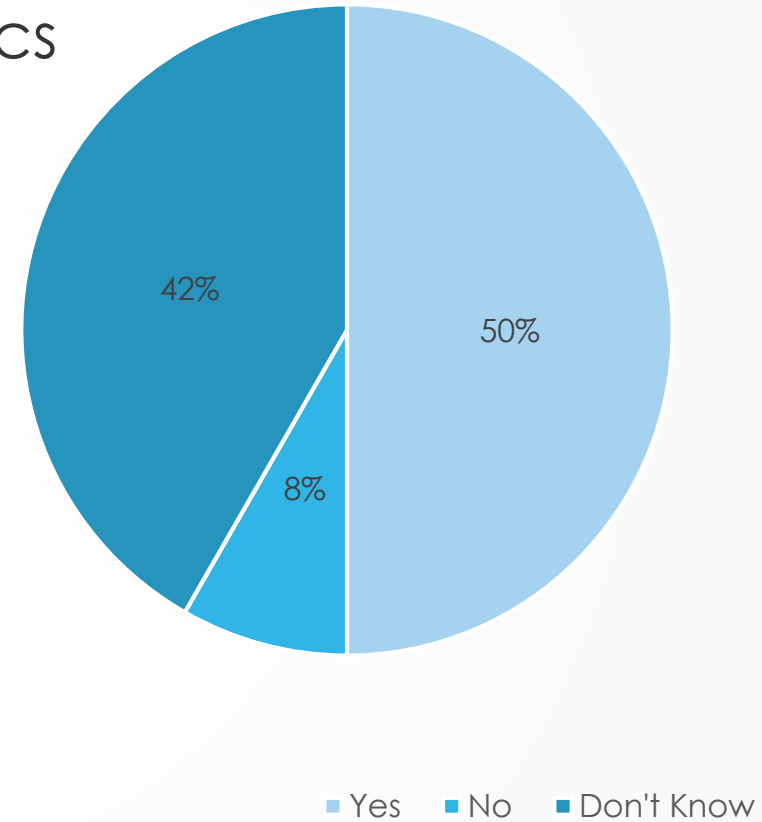
- Critical Infrastructure and Facilities
- Transportation Issues
- Community Plans and Agreements
- Mitigation Measures
- Business Plans
- Social Systems

High, Medium, Low in each section

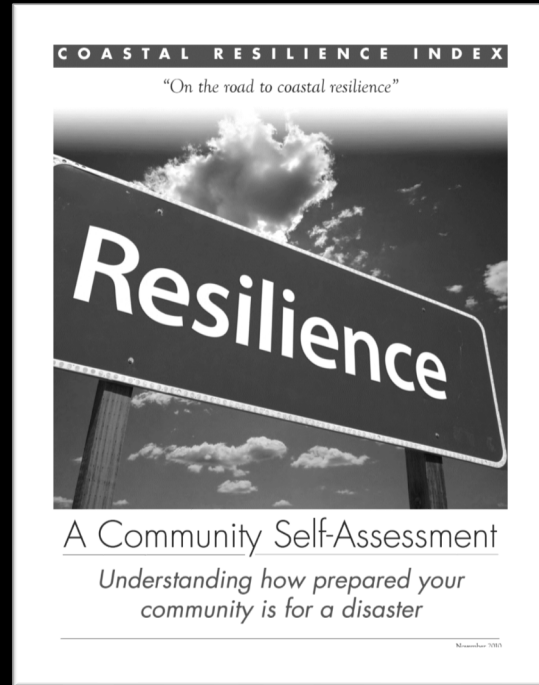
No overall “score”

Evaluation

Do you feel that other topics should be covered in the CRI?



COASTAL RESILIENCE INDEX UPDATED



COMING
Soon
TO YOUR
COMMUNITY!





Businesses Are Vulnerable

40% of small businesses do not reopen after a disaster

57% have no disaster recovery plan

\$3,000 Median daily cost of downtime for a small business impacted by an extreme weather event

Diversity of Fisheries Businesses



- Commercial Fishing: Shellfish (shrimp, oyster, blue crab)
- Charter
- Processing
- Marinas
- Associated business

Tourism Business



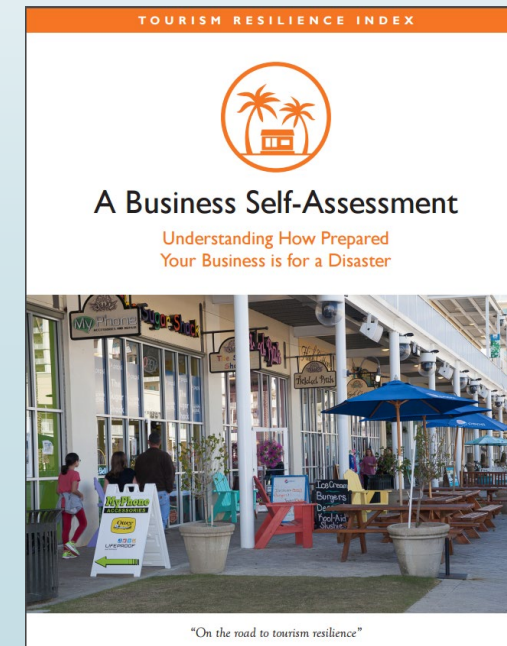
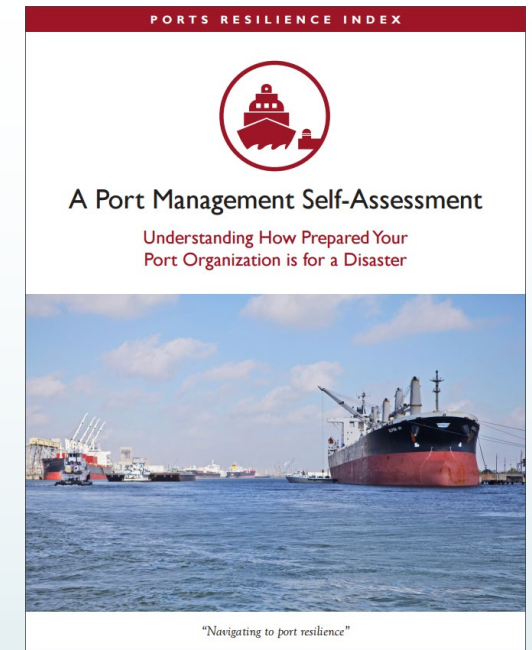
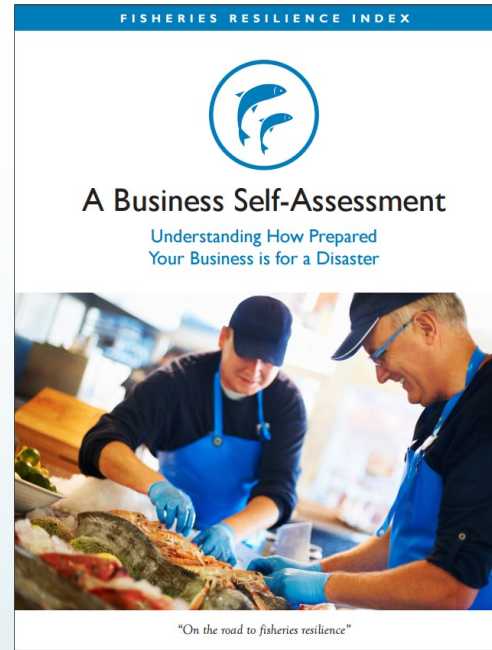
Photos: Gulf Shores/Orange Beach Tourism

Partners



Fisheries, Tourism & Ports Resilience Indices

- Follows CRI model
 - Yes/no
 - No overall score
 - Create discussion among business divisions



Sponsored by



Designed for non-commercial use

To remove branding, please use Freemake Premium Pack

<https://www.youtube.com/watch?v=QLtswOMK9V8>



Questions?

Jody Thompson

thomp13@auburn.edu

<http://masgc.org/ri>